

# ***Smart SPD 2/3/4 Writer***

## User's Manual

# CONTENTS

Copyright .....	1
Notice.....	1
Introduction .....	2
Standard Accessories .....	2
Parts and Features .....	3
A. SPD Writer .....	3
1. READ .....	3
2. COPY.....	4
3. VERIFY .....	5
4. VIEW .....	5
5. SETUP .....	6
6. ML_C+V、 M_COPY、 M_Vefi.....	9
B. SPD Buring software.....	10
Installing SPD burying Software .....	10
How to use software .....	12
PART I.....	13
PART II.....	17
PC Client function option.....	17
SPD Writer Client function option.....	20
C. Burning Board .....	23

## Copyright

The trademarks mentioned in the manual are legally registered to their respective companies.

## Notice

The Written content provided with this product is the property of RamCENTER. No part of this manual may be reproduced, copied, translated , or transmitted in any form or by any means without RamCENTER' s prior written permission. Specifications and features are subject to change without prior notice.

All the drawings Guide are diagrams. About Components quantity and style, substances shall take precedence.

### Contact Info :

RamCENTER Technology Corporation

Address : 8F.-2, No.2, Jian 8th Rd., Zhonghe District ,New Taipei City 235, Taiwan (R.O.C.)

Tel : 886 2 82269098

Fax : 886 2 82269096

E-mail : sales@ramcenter.com.tw

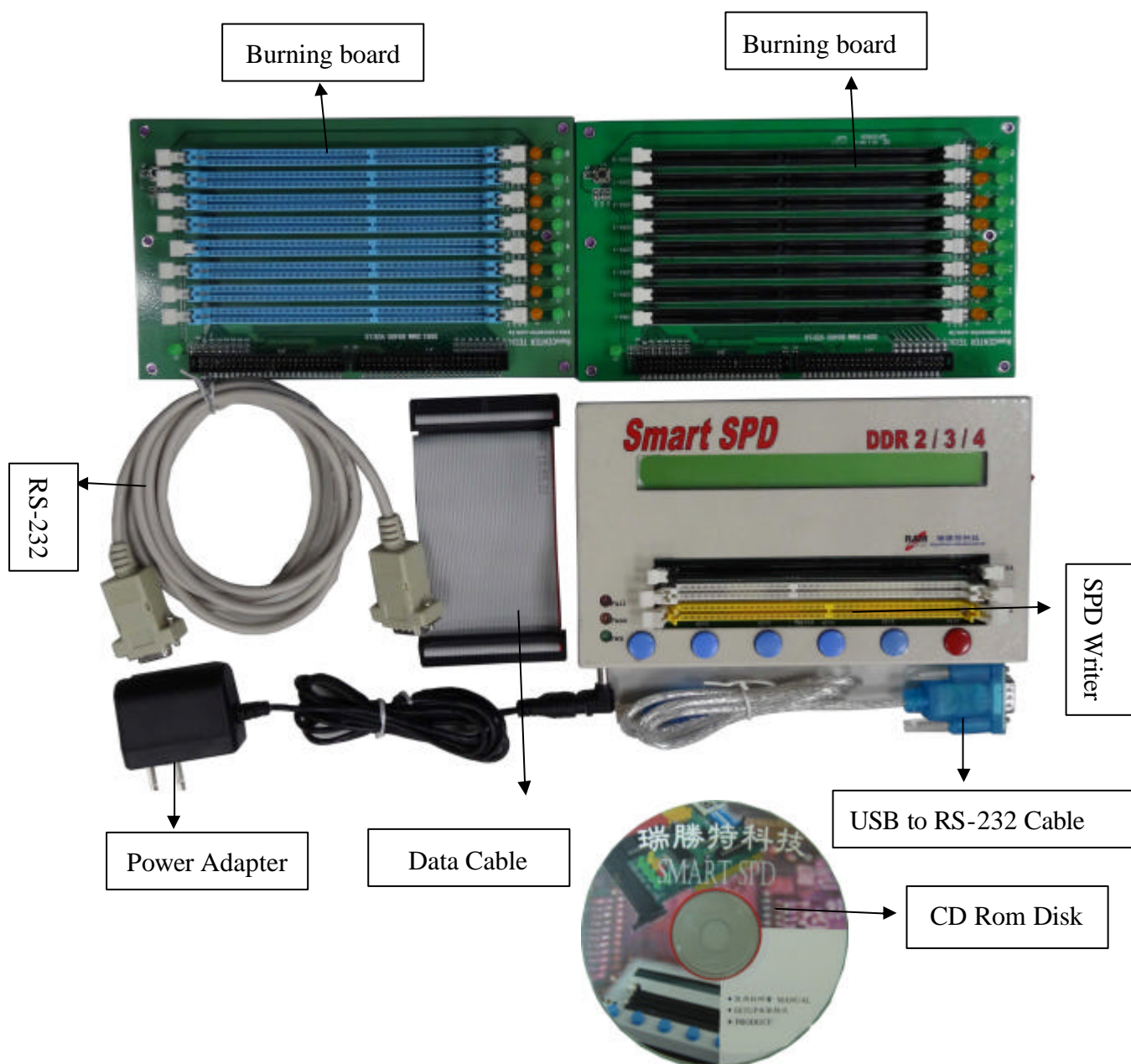
## 【Smart SPD 234 Writer】

### Introduction

Welcome to use 【Smart SPD 234 Writer】 , you will find that it is a cheap and easy tool.  
[Smart SPD 234 ] will become to your useful tool.

### Standard Accessories

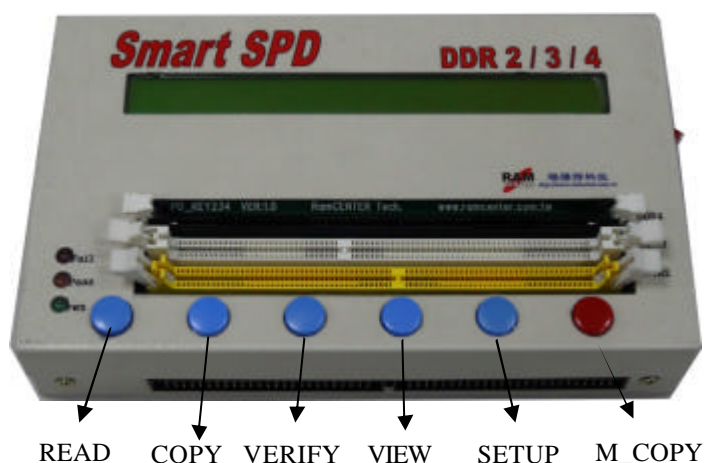
Please check whether you have received the following accessories together with the Writer. If there is any item missing , contact us to get it .



## Parts and Features

《Smart SPD 234 Writer》 have the 3 part : A. SPD Writer    B. SPD Burning software    C. Burning board.

### A. SPD Writer



With the Writer LCD monitor, you can choose 6 function to use :

A photograph of the LCD screen of the Smart SPD 234 Writer. The screen displays the following text: "SMART-SPD D2/3/4 V1.0" on the first line, "RamCENTER ?" on the second line, and a menu of options on the third line: "READ COPY VERIFY VIEW SETUP (MLVefi)".

1. READ : Read the SPD code from Writer's module and stored the SPD code in Writer.
2. COPY : SPD code will copy from Writer to the module.
3. VERIFY : Verify the Writer's SPD code and copy to module's SPD code all the same or not .
4. VIEW : Display SPD code in module and display the SPD code stored in Writer.
5. SETUP : Provide a setting you want mode
6. M\_COPY : Depending on the setting mode, the function keys will be appears three modes , you can choose in the burning Board : ML\_C+V、 M\_COPY、 M\_Vefi.

#### 1. READ

Press “READ” button and the writer will read spd code in the module . LCD will display the following sequence:

A photograph of the LCD screen showing the sequence of operations for the READ function. The screen displays: "READ DATA FROM MODULE (By SPD)" on the first line and "READ DATA NOW..." on the second line.



READ DATA FROM MODULE (By SPD)  
VERIFY DATA NOW...



READ DATA FROM MODULE (By SPD)  
\*\* READ OK \*\*                      AGAIN EXIT

Select the “AGAIN”, you can read module spd code again. If not , select “EXIT” back to the main mode.

Note : If the module not plugged in properly or EEPROM is damage , the figure below the message.



READ DATA FROM MODULE (By SPD)  
\*\* READ FAIL:DATA FAIL                      AGAIN EXIT

## 2. COPY

Press “COPY” button and the writer will copy spd code to the module . LCD will display the following sequence:



COPY DATA TO MODULE (By SPD)  
COPY DATA NOW...



COPY DATA TO MODULE (By SPD)  
VERIFY DATA NOW...



COPY DATA TO MODULE (By SPD)                      04000002  
\*\* COPY OK \*\*                      AGAIN EXIT

Select the “AGAIN”, you can copy spd code again. If not select “EXIT” back to the main mode.

Note : If the module not plugged in properly or EEPROM is damage , the figure below the message



COPY DATA TO MODULE (By SPD)  
\*\* COPY FAIL:DATA FAIL                      AGAIN EXIT



### 3. VERIFY

Press “VERIFY” button and the writer will verify the Writer’s SPD code and copy to module's SPD code all the same or not . LCD will display the following sequence:

```
VERIFY DATA WITH MODULE (By SPD)
VERIFY DATA NOW...
```

```
VERIFY DATA WITH MODULE (By SPD)
** VERIFY OK **                AGAIN EXIT
```

Select the “AGAIN”, you can verify spd code again. If not select “EXIT” back to the main function.

If verify the code is wrong ,the figure below the message :

```
VERIFY DATA WITH MODULE (By SPD)
** VERIFY FAIL:ADDRESS FAIL    AGAIN EXIT
```

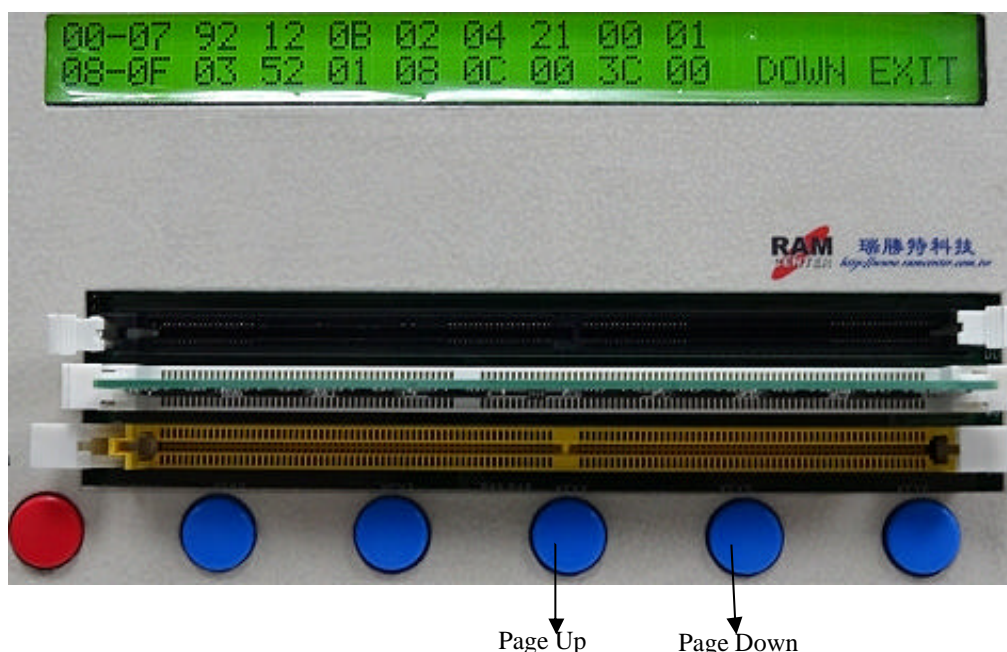
### 4. VIEW - MOD\_P0、MOD\_P1、TES\_P0、TES\_P1

Press “VIEV” button can display the SPD code in the Writer and module.

- 1.< MOD\_P0> : Display the SPD code before the 256 byte in module.
- 2.< MOD\_P1> : Display the SPD code after the 256 byte in module.
- 3.< TES\_P0> : Display the SPD code before the 256 byte in Writer.
- 4.< TES\_P1> : Display the SPD code after the 256 byte in Writer.

```
SHOW (SPD & TESTER) VALUE
MOD_P0 MOD_P1 TES_P0 TES_P1  SETUP  EXIT
```

```
00-07 92 10 0B 02 03 19 00 01
08-0F 03 52 01 08 0C 00 3C 00  DOWN EXIT
```



## 5. SETUP - M\_FUNC、A\_s/n、V\_s/n、D\_s/n、ROM\_SIZE。

Press “SETUP” button have 5 mode can choose to setup : “M\_FUNC” 、 ”A\_s/n “ 、 ” V\_s/n “ 、 ” D\_s/n “、 ” ROM\_SIZE “:

```
(ML_C+V) I (OFF) I (OFF) I (H-L) I (By SPD)
M_FUNC  A_s/n V_s/n D_s/n ROM_SIZE EXIT
```

“M\_FUNC” : You can change the option in the burning board

<ML\_C+V> : Burning and verify the spd code in the burning board

```
ML_C+V I (OFF) I (OFF) I (H-L) I (By SPD)
M_FUNC  A_s/n V_s/n D_s/n ROM_SIZE EXIT
```

<M\_Copy> Burning the spd code in the burning board

```
ML_Copy I (ON) I (ON) I (L-H) I (ROM256)
M_FUNC  A_s/n V_s/n D_s/n ROM_SIZE EXIT
```

<M\_Vefi> : Verify the spd code in the burning board

```
ML_Vefi I (ON) I (ON) I (L-H) I (ROM512)
M_FUNC  A_s/n V_s/n D_s/n ROM_SIZE EXIT
```

Select “EXIT” back to the main mode and LCD will



display before your setup .

<ML\_C+V>

```
SMART-SPD D2/3/4 U1.0      RamCENTER ?  
READ COPY VERIFY VIEW  SETUP (ML_C+V)
```

<M\_Copy>

```
SMART-SPD D2/3/4 U1.0      RamCENTER  
READ COPY VERIFY VIEW  SETUP (M_Copy)
```

<M\_Vefi>

```
SMART-SPD D2/3/4 U1.0      RamCENTER  
READ COPY VERIFY VIEW  SETUP (M_Vefi)
```

< A\_s/n >: Auto serial number is turn on or off

<ON>

```
(M_Vefi) (ON) (ON) (L-H) (ROM512)  
M_FUNC A_s/n V_s/n D_s/n ROM_SIZE EXIT
```

<OFF>

```
(ML_C+V) (OFF) (OFF) (H-L) (By SPD)  
M_FUNC A_s/n V_s/n D_s/n ROM_SIZE EXIT
```

Select “EXIT” back to the main mode. When the LCD top right display “?” that is the auto serial number have been turned on, if top right no display “?” that is the auto serial number have been turned off .

< V\_s/n >: Verify the spd code include the serial number that is turn on or off

<ON>

```
(M_Vefi) (ON) (ON) (L-H) (ROM512)  
M_FUNC A_s/n V_s/n D_s/n ROM_SIZE EXIT
```

<OFF>

```
(ML_C+V) | (OFF) | (OFF) | (H-L) | (By SPD)
M_FUNC   A_s/n U_s/n D_s/n ROM_SIZE EXIT
```

<D\_s/n>: Select the auto serial number direction

<H-L> : High to Low

```
(ML_C+V) | (OFF) | (OFF) | (H-L) | (By SPD)
M_FUNC   A_s/n U_s/n D_s/n ROM_SIZE EXIT
```

<L-H> : Low to High

```
(M_Uefi) | (ON) | (ON) | (L-H) | (ROM512)
M_FUNC   A_s/n U_s/n D_s/n ROM_SIZE EXIT
```

<ROM\_SIZE> : Select EEPROM capacity

<By SPD> : It will automatically determine the EEPROM capacity is 256 MB or 512 MB

```
(ML_C+V) | (OFF) | (OFF) | (H-L) | (By SPD)
M_FUNC   A_s/n U_s/n D_s/n ROM_SIZE EXIT
```

<ROM256> : Forcefully setting a capacity of 256 MB EEPROM

```
(M_Copy) | (ON) | (ON) | (L-H) | (ROM256)
M_FUNC   A_s/n U_s/n D_s/n ROM_SIZE EXIT
```

<ROM512> : Forcefully setting a capacity of 512 MB EEPROM

```
(M_Uefi) | (ON) | (ON) | (L-H) | (ROM512)
M_FUNC   A_s/n U_s/n D_s/n ROM_SIZE EXIT
```



## 6. ML\_C+V、 M\_COPY、 M\_Vefi

“ML\_C+V” : Burning board can support 1-8 pcs module copy and verify the SPD code from the writer data.

```
SMART-SPD D2/3/4 V1.0      RamCENTER ?  
READ  COPY  VERIFY  VIEW  SETUP (ML_C+V)
```

```
COPY SPD TO MULTI-BOARD (By SPD)  
COPY DATA NOW...
```

```
COPY SPD TO MULTI-BOARD (By SPD)  
VERIFY DATA NOW...
```

```
COPY SPD TO MULTI-BOARD (By SPD)57000002  
** MULTI-COPY_VERIFY OK **      AGAIN EXIT
```

“M\_COPY” : Burning board can support 1-8 pcs module copy the SPD code from the writer data.

```
SMART-SPD D2/3/4 V1.0      RamCENTER  
READ  COPY  VERIFY  VIEW  SETUP (M_Copy)
```

```
COPY SPD TO MULTI-BOARD (By SPD)  
COPY DATA NOW...
```

```
COPY SPD TO MULTI-BOARD (By SPD)57000002  
** MULTI-COPY OK **            AGAIN EXIT
```

“M\_Vefi” : Burning board can support 1-8 pcs module verify the SPD code from the writer data.

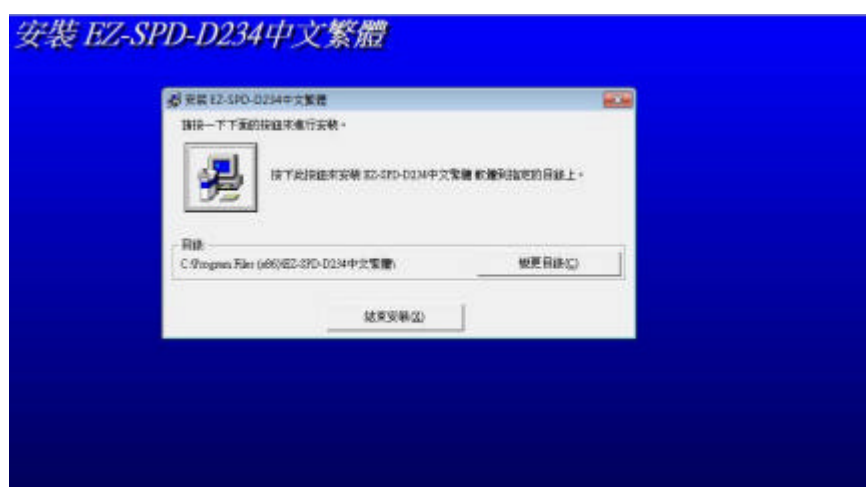
```
SMART-SPD D2/3/4 V1.0      RamCENTER ?  
READ  COPY  VERIFY  VIEW  SETUP (M_Vefi)
```

```
COPY SPD TO MULTI-BOARD (By SPD)  
VERIFY DATA NOW...
```

```
COPY SPD TO MULTI-BOARD      57000002  
** MULTI-VERIFY OK **      AGAIN EXIT
```

## B. SPD Buring software

### Installing SPD buring Software

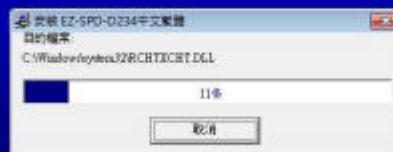




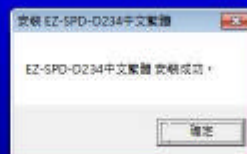
## 安裝 EZ-SPD-D234 中文繁體



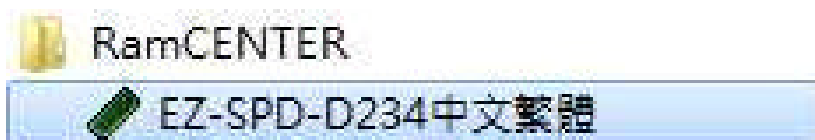
## 安裝 EZ-SPD-D234 中文繁體



## 安裝 EZ-SPD-D234 中文繁體



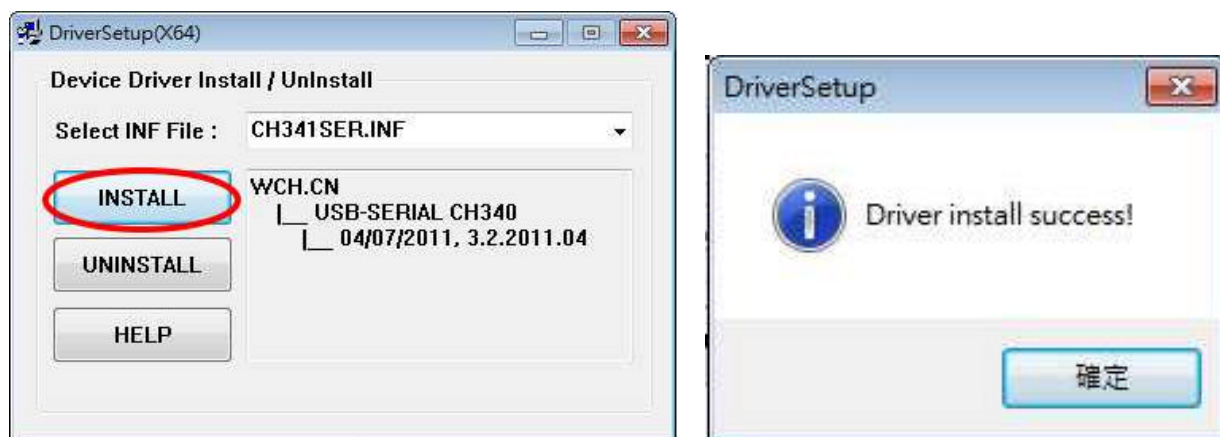
Install OK :



## *Installing USB TO RS-232 driver*

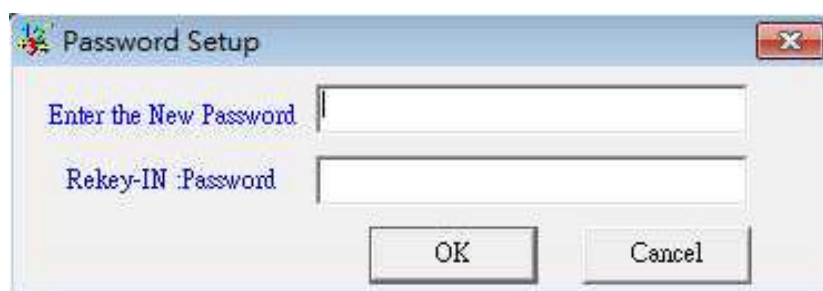
When you need to use USB to RS-232 cable can install this driver.

The files name is the <HL-340.EXE>.

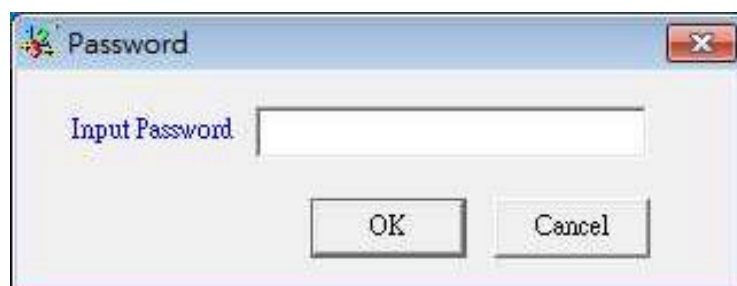


## *How to use software*

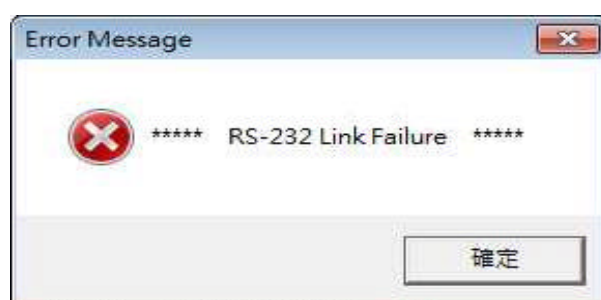
When you first time enter the software, it will require you to setup the password.



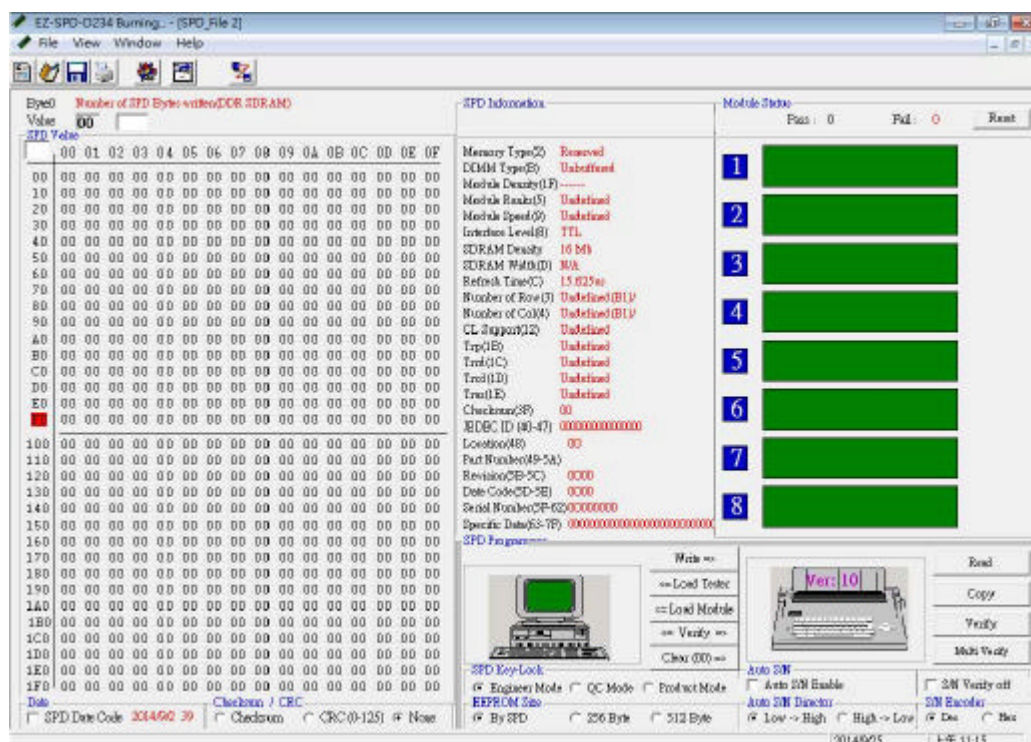
If entered the wrong password , It will be only use some features, cannot use all the features.



Before entering the program , please make sure the power is turned on SPD Writer.

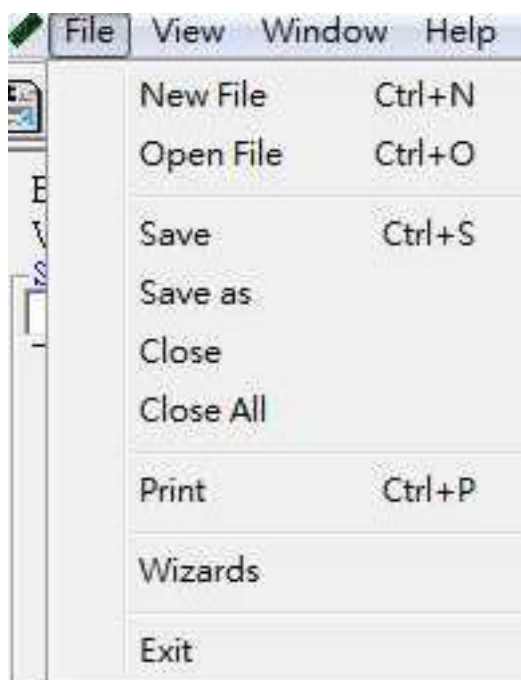


## Parts and Features

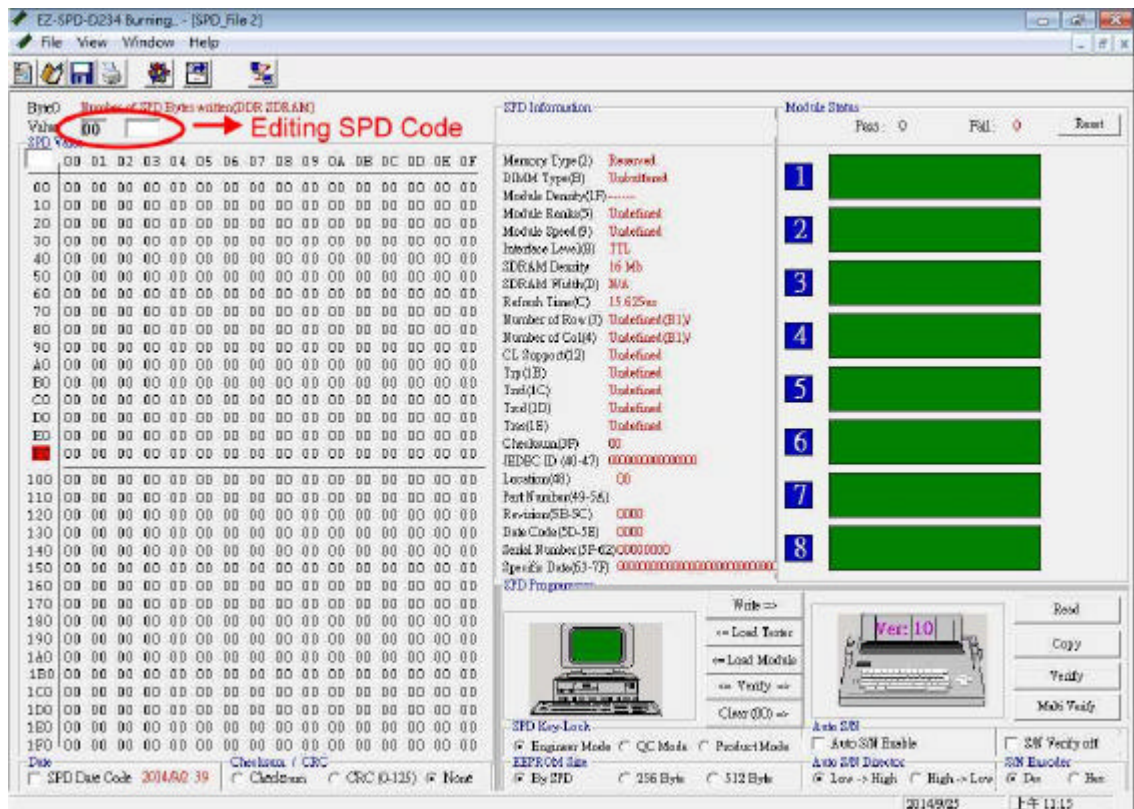


## PART I

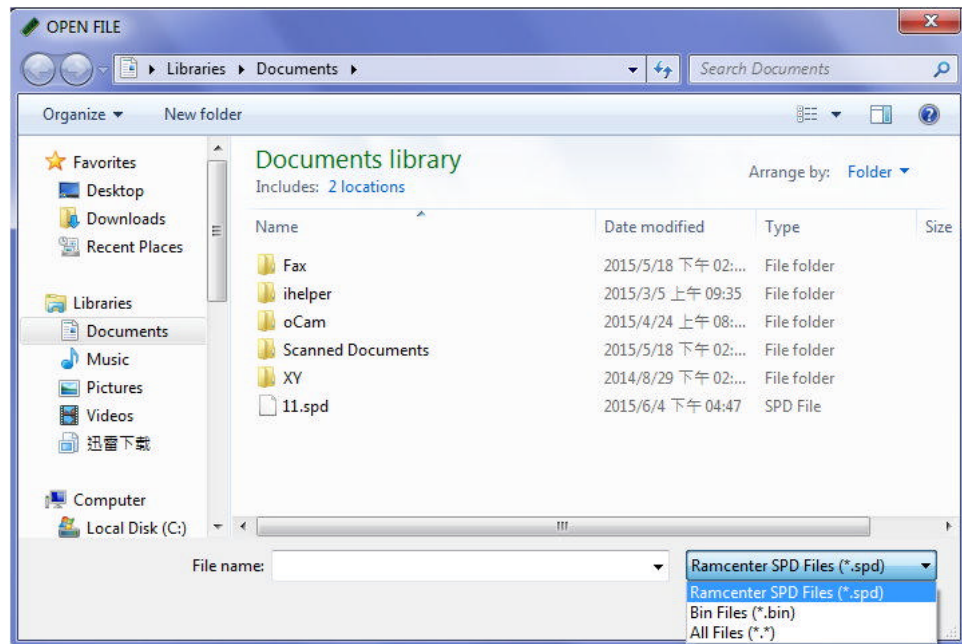
< File >



## 1. Create a new file

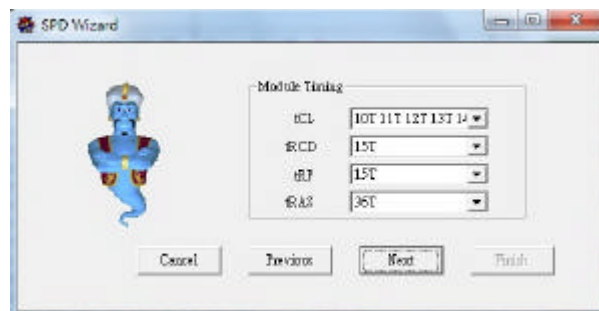
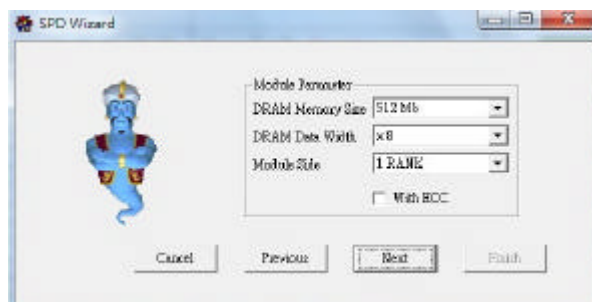
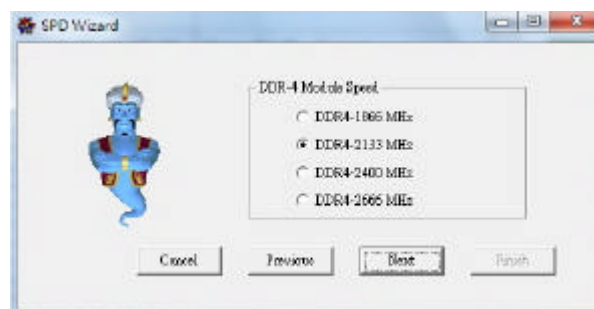
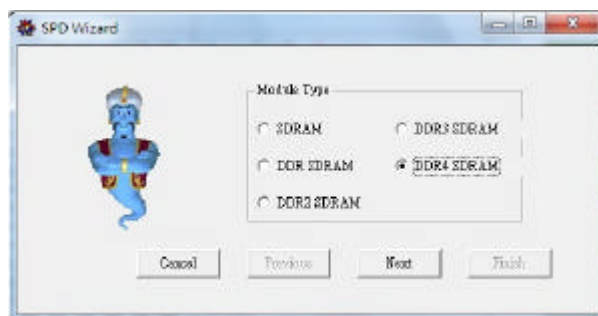


## 2. Open file : support the \*.BIN 、\*.SPD format.





### 3. Wizard : You can use the wizard to create the required specification for SPD .



< View >

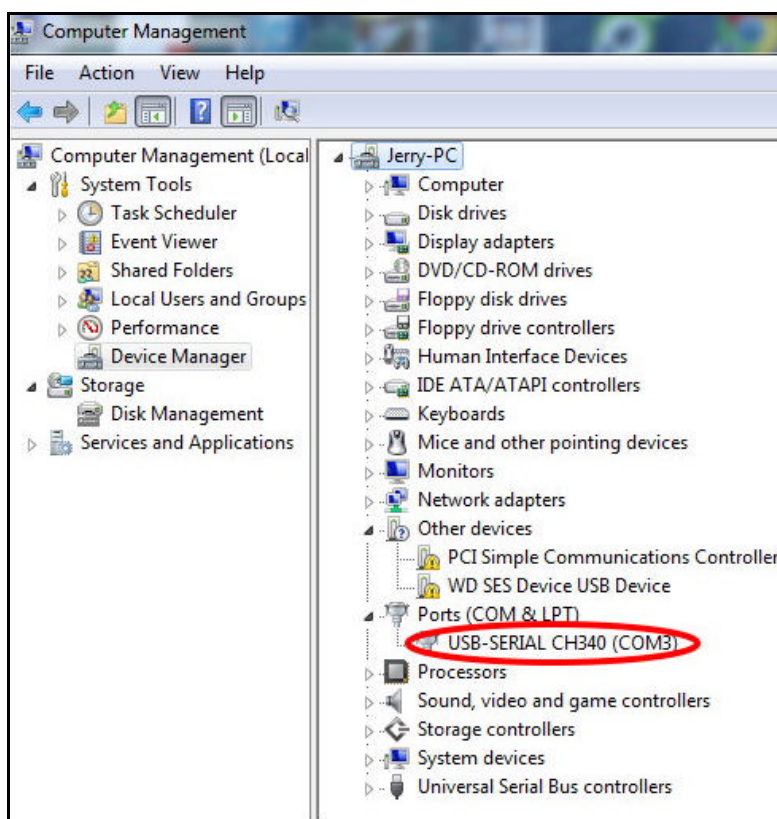
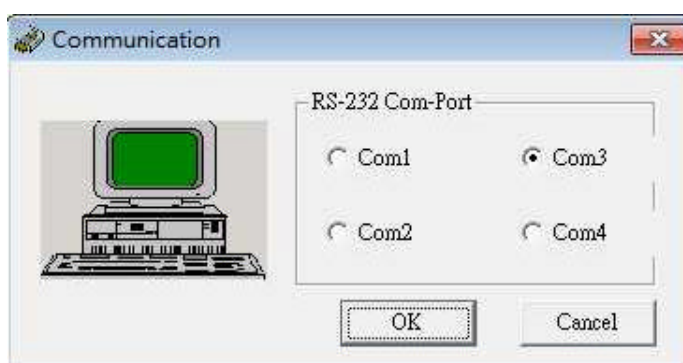


## 1.Password Setting :

In addition to first set a password, the password can be changed in here.

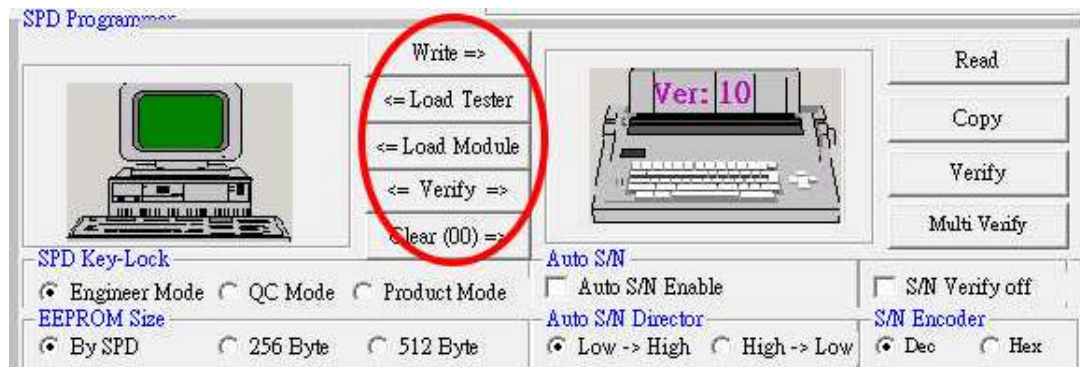


## 2. Communication :

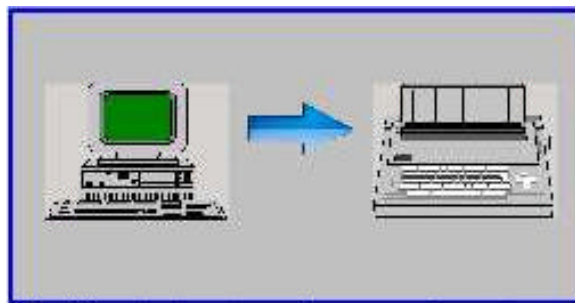


## PART II

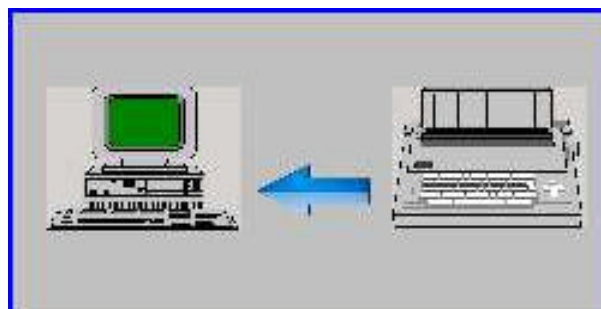
### PC Client function option :

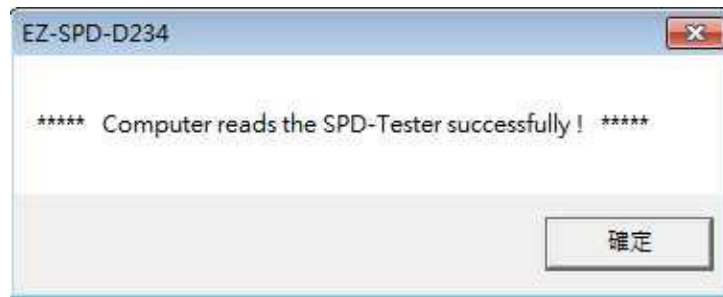


1. **Write** : You can upload the spd code from pc client to the SPD Writer .

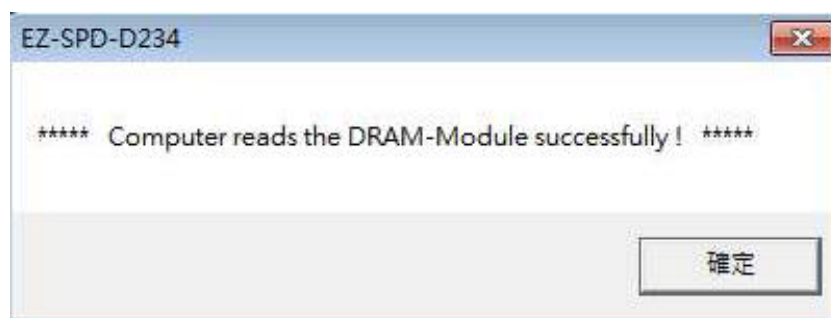
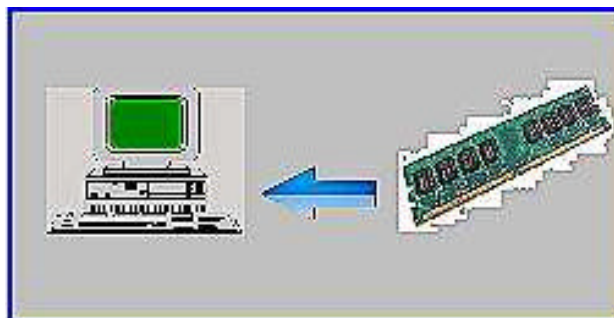


2. **Load Tester** : You can upload the spd code from SPD Writer to the pc client.

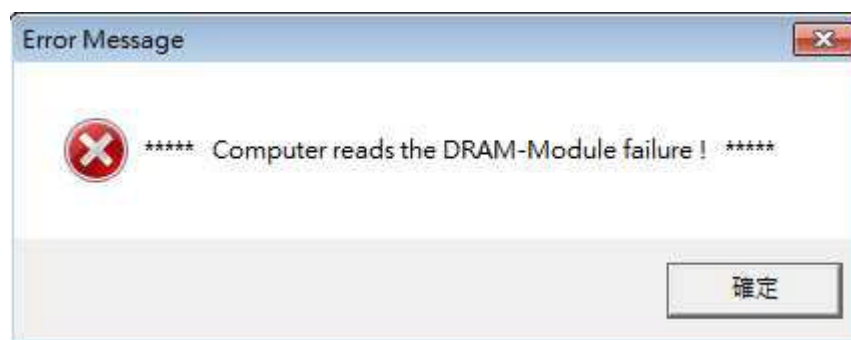




**3. Load Module :** You can upload the spd code from in the SPD Writer module's to the PC client.

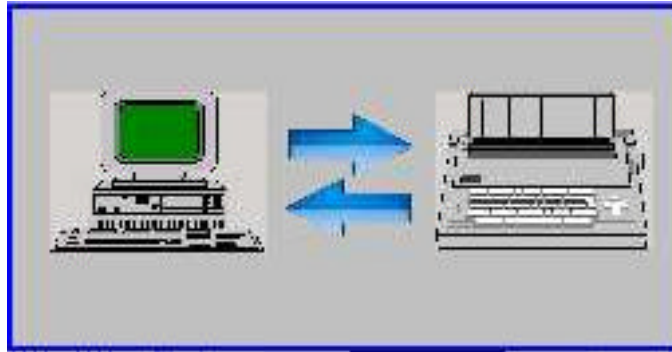


If the module not plugged in properly or EEPROM is damage , the figure below the message :

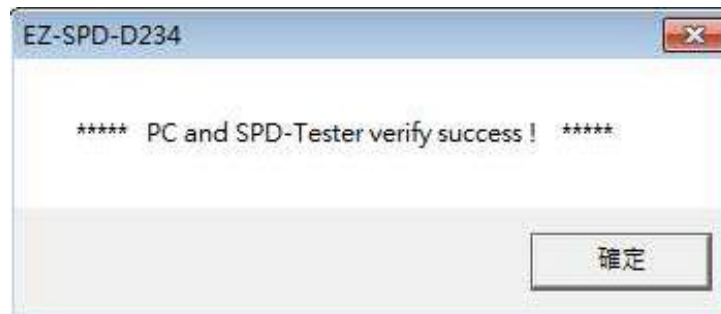




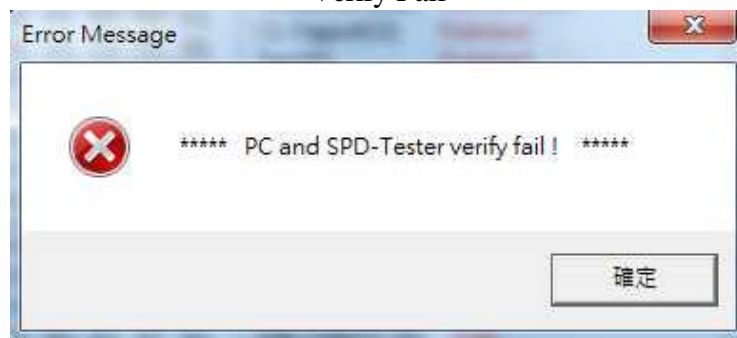
**4. Verify :** Verify the PC client SPD code and SPD Writer's SPD code all the same or not .



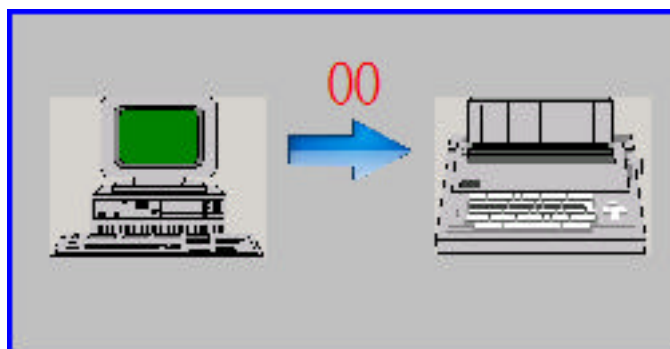
Verify Success

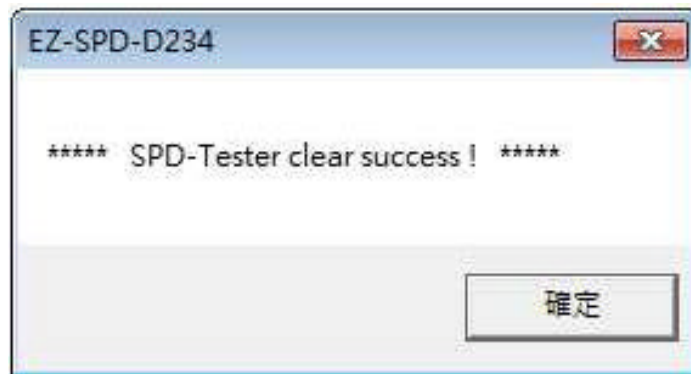


Verify Fail

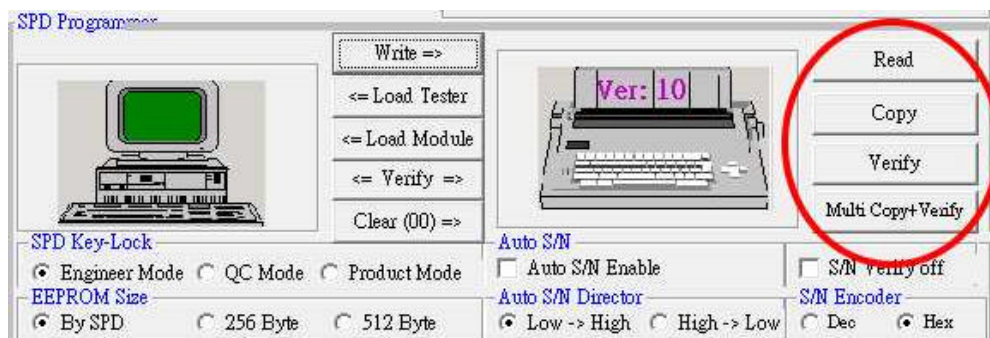


**5. Clear (00) :** Clear the SPD Code from the SPD Writer.





### SPD Writer Client function option :



1. READ : Read the SPD code from SPD Writer's module and stored the SPD code in the Writer.
2. COPY : SPD code will copy from Writer to the module.
3. VERIFY : Verify the Writer's SPD code and copy to module's SPD code all the same or not .
4. Multi Copy+Verify : Copy and verify the SPD code from the writer data to the Burning board's module.

**Note :** The function can used the "SETUP" to choose below these option in the SPD Writer : " Multi Copy+Verify" MLC + VM\_Copy", "M\_Vec" . Before to you select the desired function. please reconnect the PC client to continue .

**Note :** When you use the burning board , First must be remove the module on the SPD Writer , Otherwise there will be a case of false or wrong in the burning board module.

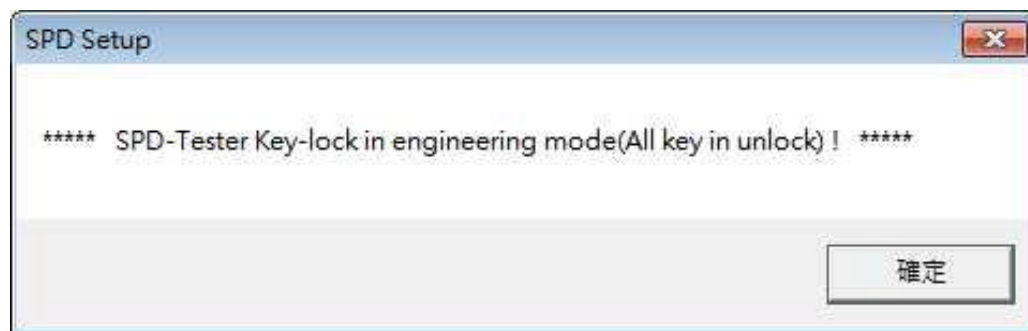
✦ When the copy is complete , The screen will display the burning Board burning status.

1		PASS
2		PASS
3		PASS
4		PASS
5		PASS
6		PASS
7		PASS
8		PASS

1		FAIL
2		FAIL
3		FAIL
4		FAIL
5		FAIL
6		FAIL
7		FAIL
8		FAIL

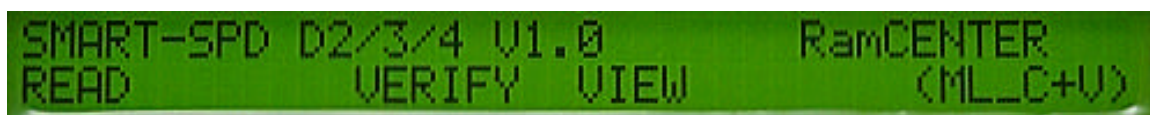
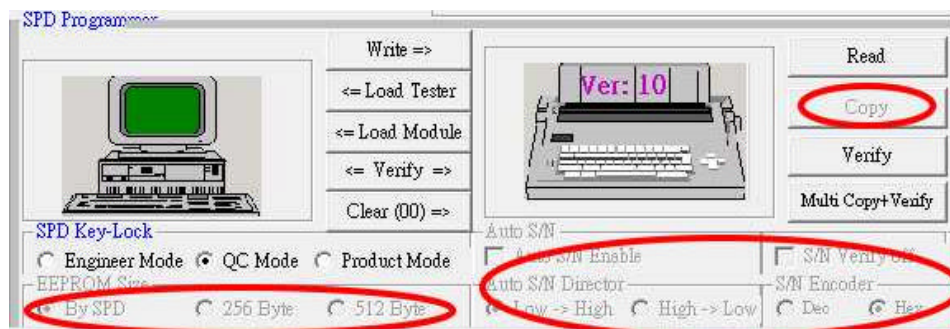
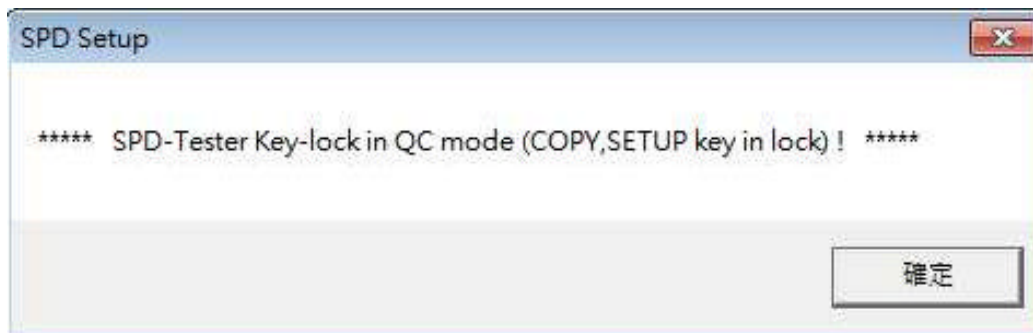
## SPD Key Lock : Engineer Mode、QC Mode 、Product Mode

**1. Engineer Mode :** When you select the engineering mode, It represent all the keys unlocked and all functions can be used



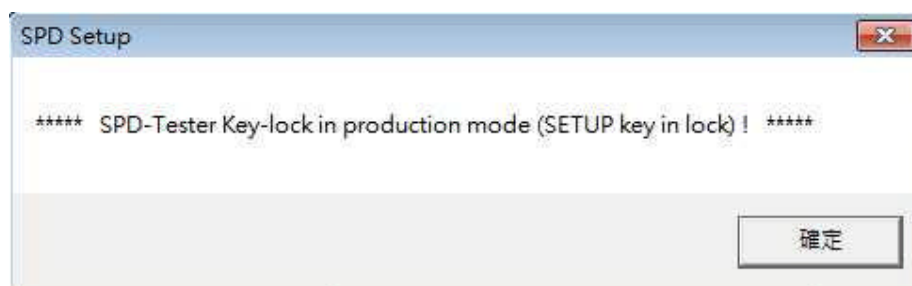
**2. QC Mode :** When you select the QC mode, It represent the COPY 、 SETUP function key is lock and some functions can be used to choose.

**Note :** When the part of Highlight that is the functions can not to choose.

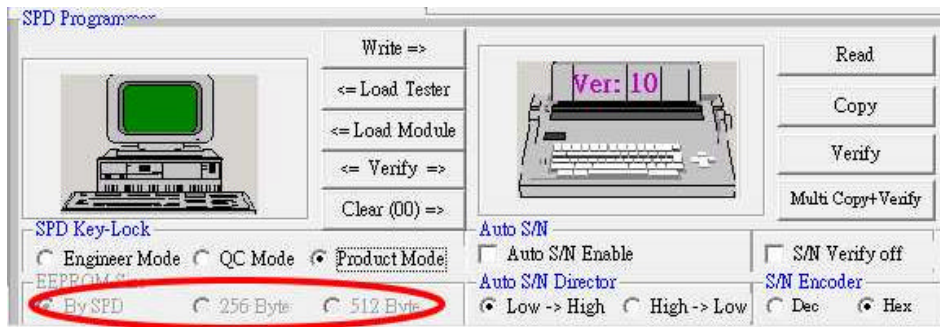


**3. Product Mode :** When you select the product for Product mode, It represent the SETUP function key is lock and some functions can be used to choose

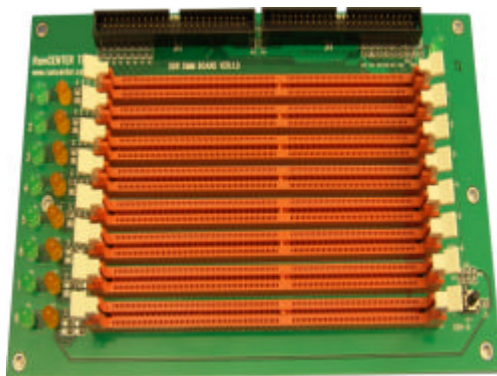
**Note :** When the part of Highlight that is the functions can not to choose.







### C. Burning Board



Press the button to burning in the burning board , can use the same of the SPD Writer' s Setup.